



**CUSHMAN &
WAKEFIELD**

AVAILABLE

Ellis Preserve - Newtown Square

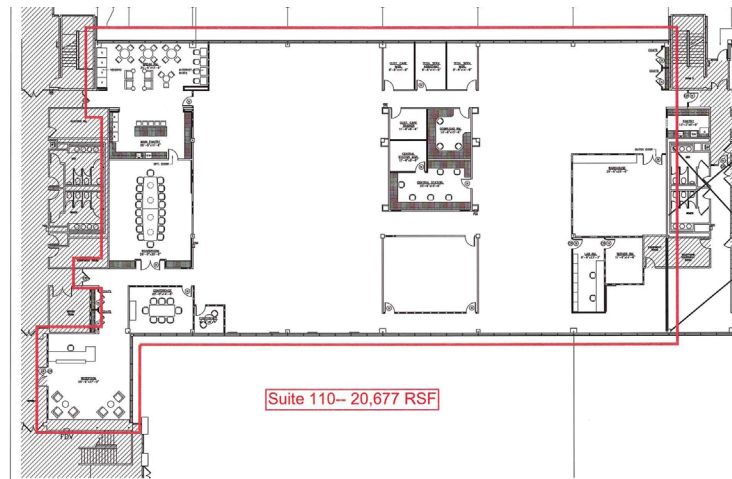
3803 West Chester Pike / Newtown Square, PA



Suite 110 ~ +/- 20,677 RSF (Divisible)

Property Highlights

- Class A Office space
- Immediately Available
- Complimentary Bldg. conference room use
- Beautiful campus setting within the heart of Newtown Square
- On-site cafe, fitness center and conference facilities, exercise trails, Daycare Center
- Oversize Glass Line / Abundant Natural Light
- 100% Covered Parking
- Owned and managed by affiliates of Equus Capital Partners, Ltd.



Gina Brennan

+1 610 722 2013

gina.brennan@cushwake.com

John Shelly

+1 610 722 2012

john.shelly@cushwake.com

Two Tower Bridge, Suite 125

One Fayette Street

Conshohocken, PA 19428

United States

+1 610 772 2000

cushmanwakefield.com

©2022 Cushman & Wakefield. All rights reserved. The information contained in this communication is strictly confidential. This information has been obtained from sources believed to be reliable but has not been verified. NO WARRANTY OR REPRESENTATION, EXPRESS OR IMPLIED, IS MADE AS TO THE CONDITION OF THE PROPERTY (OR PROPERTIES) REFERENCED HEREIN OR AS TO THE ACCURACY OR COMPLETENESS OF THE INFORMATION CONTAINED HEREIN, AND SAME IS SUBMITTED SUBJECT TO ERRORS, OMISSIONS, CHANGE OF PRICE, RENTAL OR OTHER CONDITIONS, WITHDRAWAL WITHOUT NOTICE, AND TO ANY SPECIAL LISTING CONDITIONS IMPOSED BY THE PROPERTY OWNER(S). ANY PROJECTIONS, OPINIONS OR ESTIMATES ARE SUBJECT TO UNCERTAINTY AND DO NOT SIGNIFY CURRENT OR FUTURE PROPERTY PERFORMANCE.



**CUSHMAN &
WAKEFIELD**

AVAILABLE

Ellis Preserve - Newtown Square

3803 West Chester Pike / Newtown Square, PA

