

3813
WEST CHESTER PIKE
NEWTOWN SQUARE :: PENNSYLVANIA

Ellis Preserve
AT NEWTOWN SQUARE

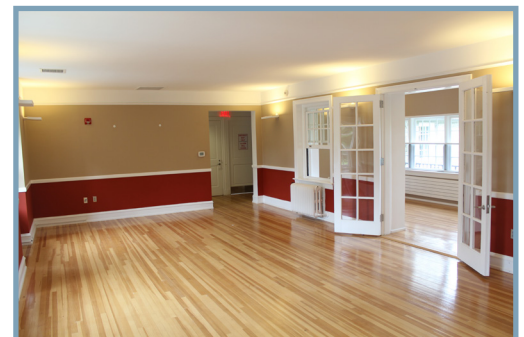
A TRULY UNIQUE PROPERTY



- FEATURES**
- Distinguished office space on two floors in a unique turn of the century building
 - Built in the early 1900's, completely renovated and updated with new systems
 - Beautiful campus setting within the heart of Newtown Square
 - On-site cafeteria, fitness center and conference facilities

FOR MORE
INFORMATION
PLEASE
CONTACT

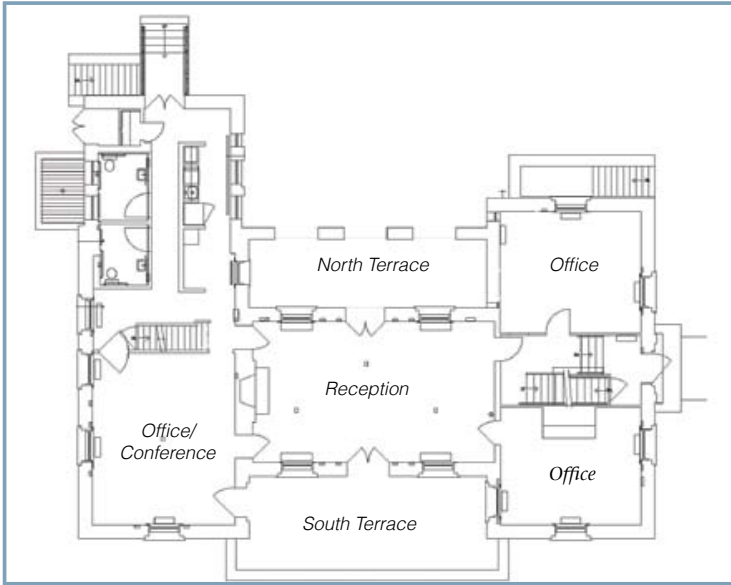
Neil Gallagher
Vice President
215-575-2483
ngallagher@equuspartners.com



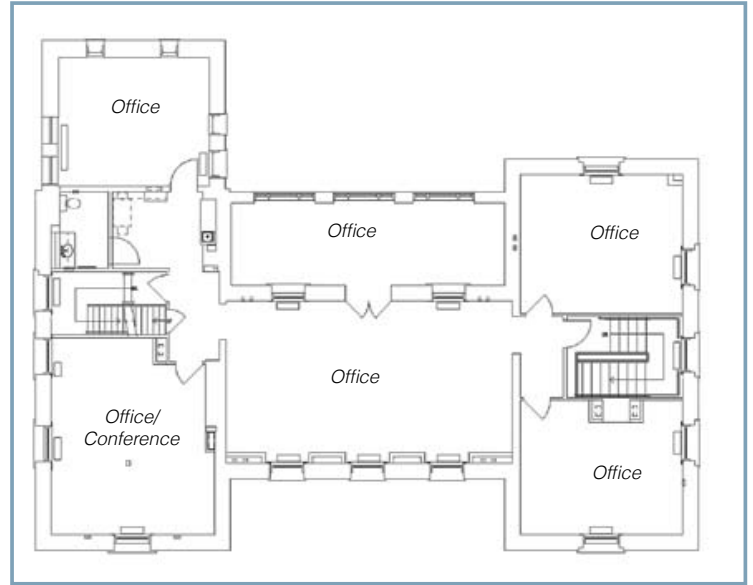
3813 WEST CHESTER PIKE

NEWTOWN SQUARE :: PENNSYLVANIA

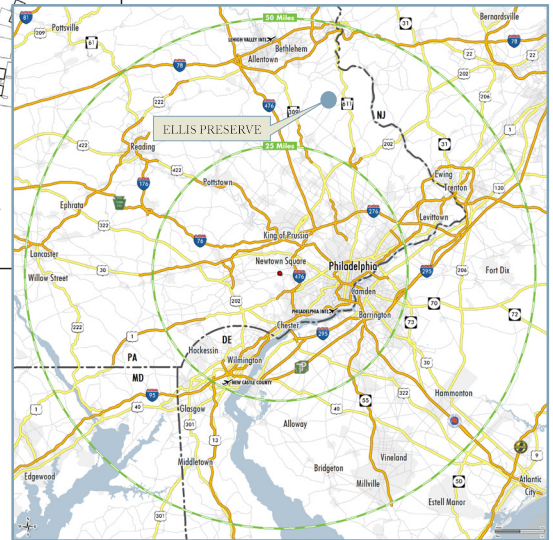
Ellis Preserve
AT NEWTOWN SQUARE



FIRST FLOOR--AVAILABLE



SECOND FLOOR--Leased



FOR MORE
INFORMATION
PLEASE
CONTACT

Neil Gallagher
Vice President
215-575-2483
ngallagher@equuspartners.com